

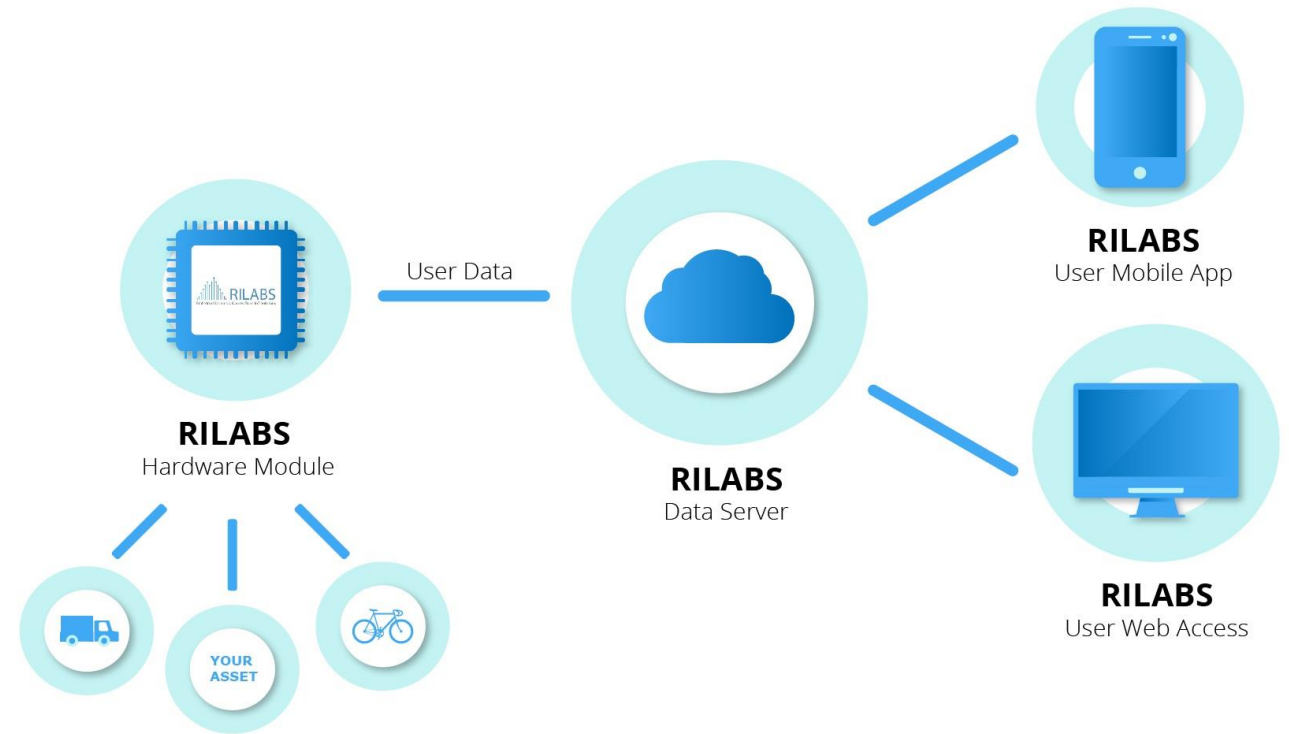


# AGRILA - Modular IoT Sensor Station for Smart Agriculture



# Introduction

- ▶ We are RILABS PLC - Sofia based Internet of Things company. We provide an in-house developed platform, that facilitates the transformation of analog assets and businesses into digital, smart, connected counterparts.
- ▶ Our main office is located in Sofia, Bulgaria and our hardware development team and production is based in Blagoevgrad, Bulgaria



# AGRILA Features

- AGRILA sensor stations consist of a set of soil and weather sensors, solar panel, radiation shield, modular mechanical construction and a smart communication box with cellular data transfer and a battery.
- The sensor stations measure and transfer data to the AGRILA cloud via a GSM connection. The data can be transferred to an external cloud via a REST API.
- AGRILA is delivered in a preinstalled condition. The only effort needed by the client is to mount the specially designed mounting tripod.
- AGRILA sensor stations are rugged for the special needs of agriculture environment.
- AGRILA sensor stations and cloud services are provided as a white label building block. The communication module can be branded according to the specific requirements.



# AGRILA sensor station

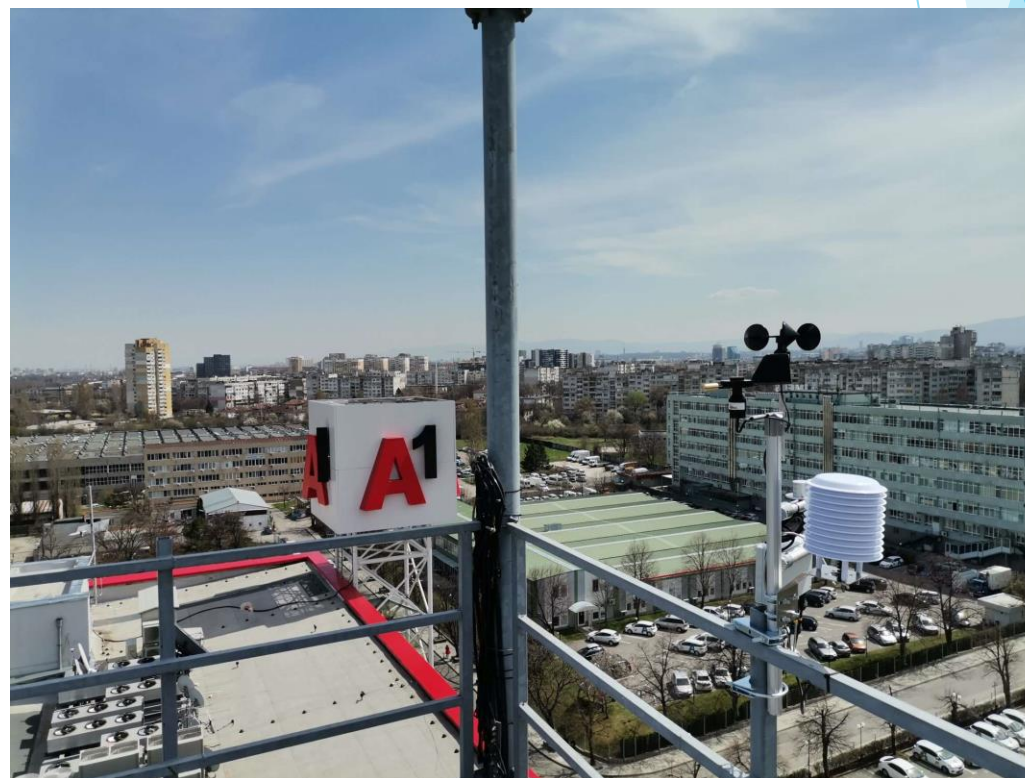
- AGRILA sensor stations are solar powered, out of the box, waterproof, rugged, easy to install and to maintain.
- AGRILA sensor stations have theft detection (accelerometer), GPS positioning and remote software update.
- The sensor station can work up to 6 weeks without any sunlight.
- AGRILA sensor stations have a warranty of 2 years.
- AGRILA sensors do not require any calibration on-site.





# Agrila Sensor Station

[Click to see  
AGRILA in 3D](#)

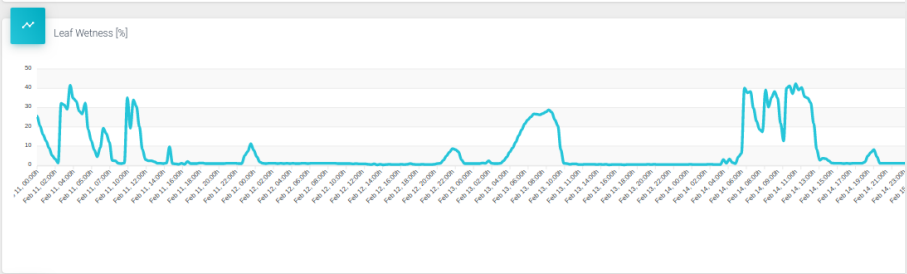
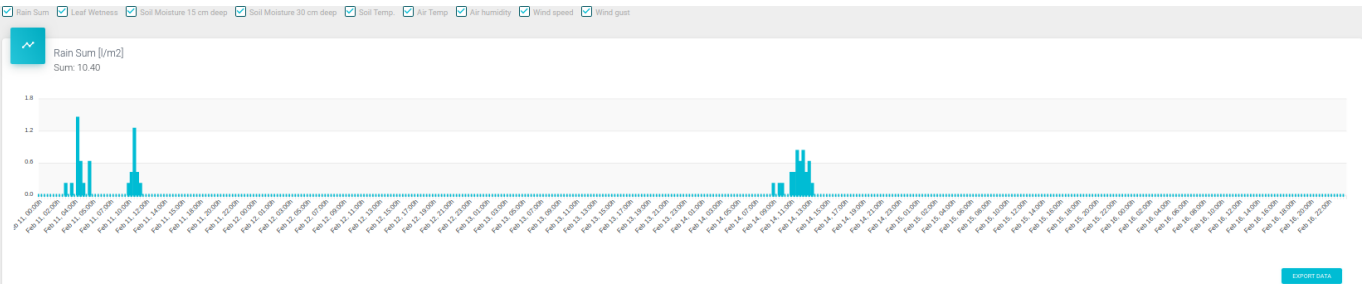


# Currently Available Sensors

AGRILA sensors are supplied by German, Swiss, Danish and US manufactures

- Wind speed and direction
  - Thies Clima [link](#) / Inspeed speed [link](#) / Inspeed direction [link](#)
- Leaf wetness sensor (LWS):
  - METER Phytos 31 [link](#)
- Rain gauge
  - PRONAMIC Rain-O-Matic Professional [link](#)
- Soil moisture and temperature sensor
  - Truebner SMT50 [link](#)/SMT100 via SR485 [link](#)
- Air humidity and temperature sensor
  - Sensirion SHT21 [link](#)
  - HYT939 [link](#)
- Solar Irradiation
- Rain & Snow Sensor

# User Interface



Language:

Forecast

16 °C

Mostly Cloudy

THURSDAY  
5/28/2020

Showers and thunderstorms

10 / 19 °C  
3 m/s

FRIDAY  
5/29/2020

Showers and thunderstorms late

11 / 21 °C  
2 m/s

SATURDAY  
5/30/2020

Times of sun and clouds

12 / 22 °C  
3 m/s

Map

Satellite

Map

Satellite

Map

Satellite

Name  
**Babuk 1**

Region  
---

Soil category  
**CLAY**

Season start  
---

Rain Sum 24h  
**3.8 l/m2**

Leaf Wetness  
---

Soil Temp.  
**16 °C**

Soil Moisture 15 cm  
**28 %**

Battery  
**4.142 V**

Acresage  
**1163**

Culture  
---

Season end  
---

Air Temp  
**15 °C**

Air humidity  
**69 %**

Wind speed  
**0.4 m/s**

Wind direction  
**E**

Wind gust  
**2.3 m/s**

Map

Satellite

Map

Satellite

Map

Satellite

Map

Satellite

Weather data

Rain Sum [l/m2]

Air humidity [%]

# Agrila Client Network

- AGRILA client network is constatly expanding accross Europe - Greece, Serbia, Bulgaria, Romania, North Macedonia, Germany, ...
- Here are some of our clients (click the logo for details...)





# Contact



- ▶ Borislav Petrov
- ▶ CEO RILABS PLC
- ▶ [borislav.petrov@rilabs.io](mailto:borislav.petrov@rilabs.io)
- ▶ <https://rilabs.io/>
- ▶ <https://agrila.net/>

