



INTRODUCTION OF POLIRURAL

CULS, PROJECT COORDINATOR



This project has received funding from the European Union's Horizon 2020 research and innovation programme under grant agreement No 818496. This document reflects only the author's view and the Commission is not responsible for any use that may be made of the information it contains.

Challenge 1: Depopulation and gentrification of rural areas



+24M
urban
population



For 1
farmer
under 35



-8M rural
population

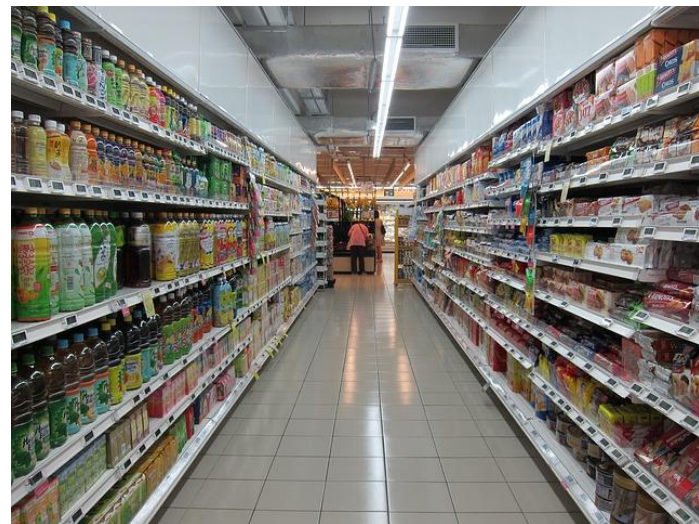


9 farmers
over 55

Challenge 2: Climate, regulatory and market changes



Regulations



Challenge 3: How to get right knowledge?

Information silos

Participatory policymaking

Top-down approach



Challenge 4: Does the knowledge reflect reality?

Needs vs. measures

Multiple stakeholders

Big picture



Project Aim

To make rural areas more attractive for living, work and investments

Scope

We will make it by:

1. Assessing attitudes
2. Exploring future trajectories of rural development
3. Co-designing new measures with multiple stakeholders

Scientific Challenges

How to overcome traditional foresight research issues?

Objective 1

1. Design policy innovation hub

1.1. Stakeholder community

1.2. All regional stakeholders active in policy co-creation

1.3. Foster knowledge exchange across regions

Objective 2

2. Measure prevailing attitudes toward rural policies

2.1. Benefits of text mining

2.2. Text mining for *needs* and *evaluation* of policies

2.3. Data visualization and user feedback

Objective 3

3. Explore future trajectories of rural development

3.1. Conceptual model of rural ecosystems

3.2. System dynamics model

3.3. Combined approach promotion for policy making

Objective 4

4. Co-designing new measures with multiple stakeholders

4.1 Investigating factors affecting attractiveness of rural places and professions

4.2 New knowledge and insights

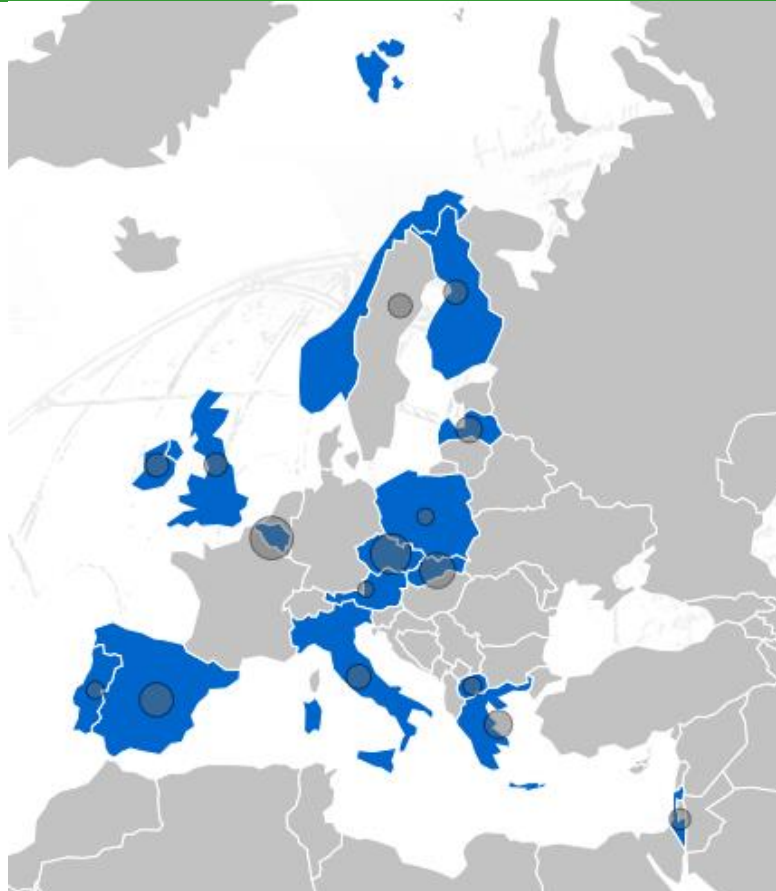
4.3 Policy recommendations and adopted measures

Consortium

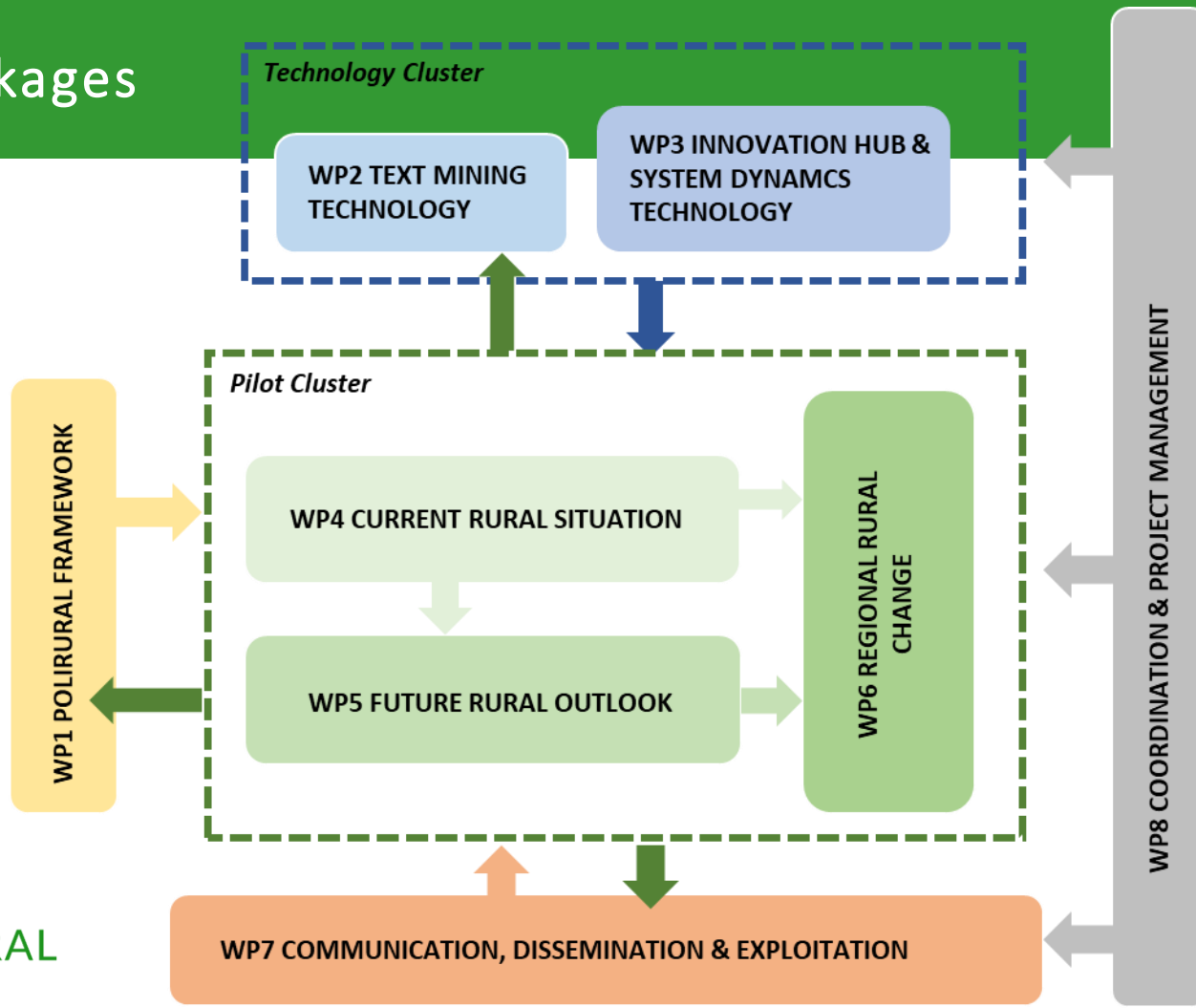
37 partners

28 involved in pilot activities

12 regional pilots



Work Packages



WP Leaders

WP1 – 21C

WP6 – MIGAL

WP2 – KAJO

WP7 – SPI

WP3 – CCSS

WP8 – CULS

WP4 – HAMK

WP9 – CULS

WP5 – CKA

Outputs: Technologies



Semantic
Explorer

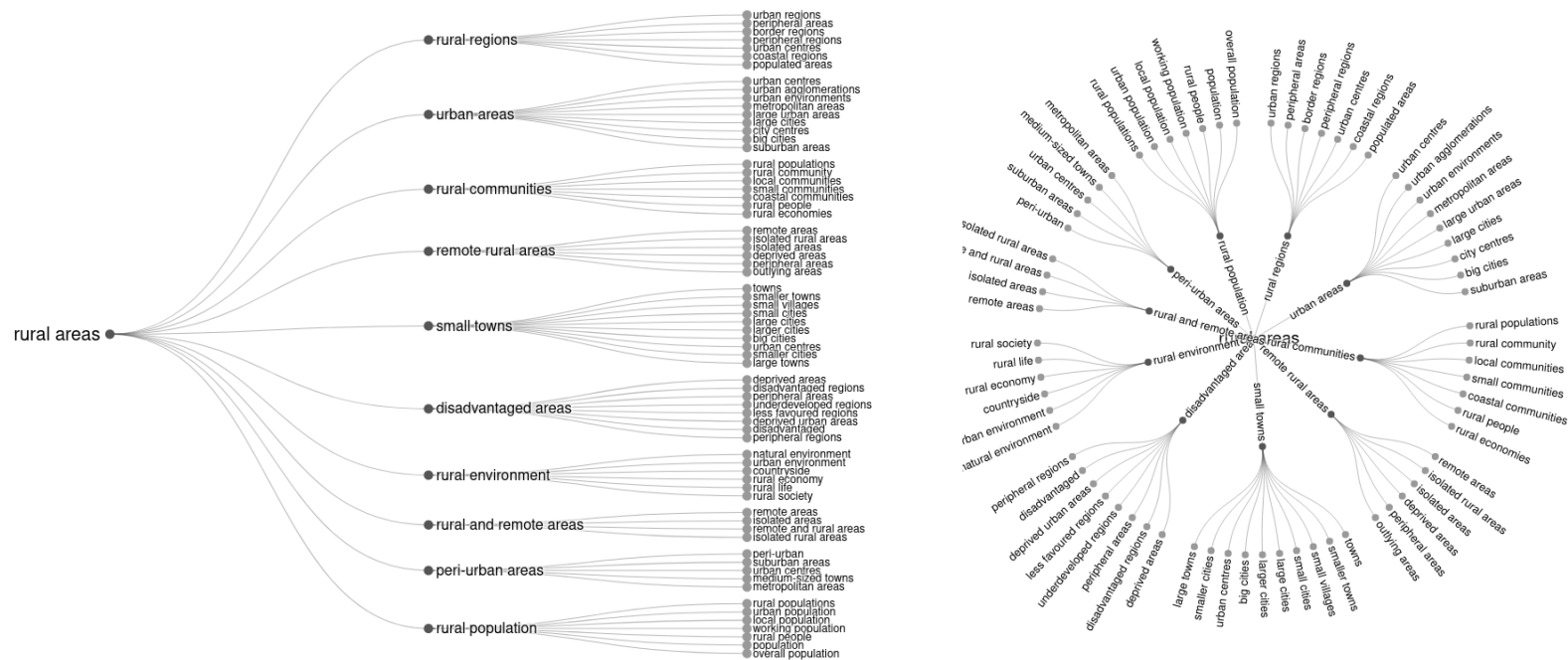


Policy
Simulator



Innovation
Hub

Topic Manager: Semantic Similarity Cluster

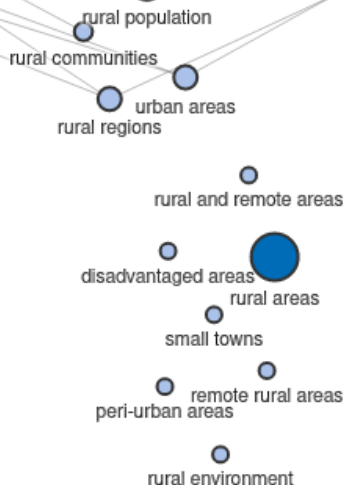


Semantic Explorer: Topics Browser

Similar Topics

Which towns in rural Ireland are worth investing i ...
Home - Euromontana
PowerPoint Presentation
Shared mobility: the "Rosetta stone" for rural are ...
Ministry of Agriculture and Rural Development of t ...
challenges facing rural communities David Meredith ...

Factsheet Rural Development Programme Flanders Bel ...
ENDURANCE :: Home
PRtOGRAMME DEVELOPMENT SOUTHEAST PLANNING (...
Ruralnet |



Semantic Explorer: Profiler

NUI Galway Rural Studies **ORG** are delighted to be part of the new **four year DATE** **European NORP** # **H2020 PERSON** RURALIZATION project.

Led by Dr. **Maura Farrell PERSON** the project will develop knowledge to support policy making for rural regeneration focused on access to land, youth visions for rural futures, newcomers to rural areas and new entrants to farming. Great team involved in the project from **the Rural Studies Cluster - ORG** Dr. **Marie Mahon PERSON**, Dr. **Therese Conway PERSON**, Dr. **John McDonagh PERSON**, Dr. **Shane Conway PERSON** and Dr. **Aisling Murtagh PERSON** as Post-Doctoral Researcher.

The project started on **May 1st DATE** and the kick-off meeting was held in **Barcelona GPE** **last week DATE**. Check out the project fact sheet on **Cordis ORG**: bit.ly/2HxN29J
#FARMVIABILITY The **NRN ORG** has just published a new case study on **Social Farming ORG** in **Ireland GPE**.

Social farming allows participants to engage in everyday activities on ordinary working farms, helping to increase their social skills, self-esteem and confidence while also helping to improve their health and wellbeing by being out in the natural environment. Participants come from a range of backgrounds including people experiencing mental health issues, people with disabilities, and refugees, among others.

Tommy Earley Mountallen Eco PERSON **Tours GPE**, a farmer who hosts social farming placements on his farm in **Drumshanbo GPE**, Co. Leitrim and gives his experience of social farming in this case study, states that "You know activities can be wide ranging you could be looking at leaves on trees, looking at flowers, or picking spuds or splitting sticks but it doesn't matter what you're doing, it's that the person or whoever is doing it is happy out at what they are doing".

To learn more about **Social Farming ORG** in **Ireland GPE** and **Tommys PERSON** experience of being involved in **Social Farming ORG** please read the full case study here
<https://www.nationalruralnetwork.ie/farm-viability-case-studies/national-rural-network-social-farming-case-study/>

Social Farming GPE Ireland West Limerick Resources - WLR Leitrim Development Company Waterford Leader Partnership CLG South West Mayo Development Company CLG

Funding is available under the CLÁR Programme, Town and Village Renewal Scheme, **Rural Recreation Programme ORG** and the **LEADER ORG** programme to enhance and develop rural towns and villages socially, culturally, and economically.

Full details and forms are available at <https://www.westmeathcoco.ie/en/ourservices/communitydevelopment/ruralsupports/>

Please contact our Community Development Section on **044 933 2258 CARDINAL** with queries.

Submit applications by **Friday 27 March 2020 DATE**. Westmeath Community Development

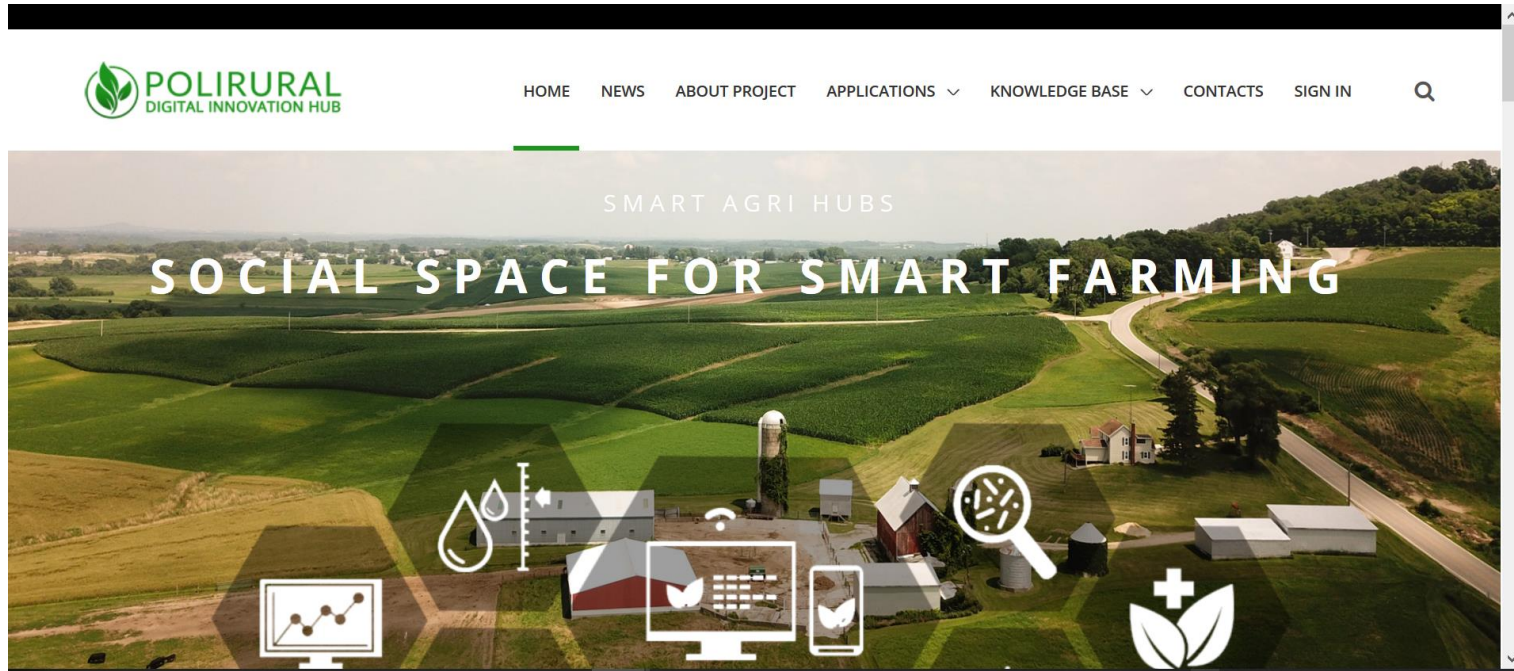
Role

- **An interaction space with forums, dialogue and Wiki capabilities to support stakeholder interaction – Social Space**
- A learning space for Massive Open Online Courses to facilitate dissemination and uptake of knowledge and methodology developed through the project
- **An experimentation space for testing analytics and visualization including text mining and system dynamics based on real data – examples of applications**
- **A development and hosting space for creating virtual instances of the shared reference to be used by each pilot when developing their applications - cloud based development environment**

Design of DiH

- Delivered in time in Month 4

PoliRural DiH



Outputs: Other



Rural
ecosystem
model



12 regional
measures



MOOC

Outputs: Other



Research
findings



Policy
recommendations



Practice
abstracts



Toolbox



Community of
Interest Network

Miloš Ulman, CZU
PoliRural Technical Manager
ulman@pef.czu.cz



This project has received funding from the European Union's Horizon 2020 research and innovation programme under grant agreement No 818496. This document reflects only the author's view and the Commission is not responsible for any use that may be made of the information it contains.